



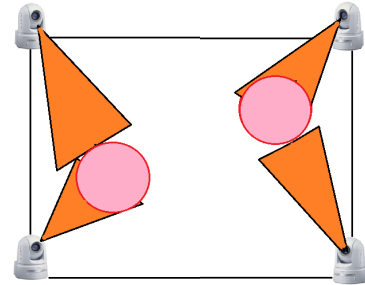
Computer Vision System Toolbox (II)



Riku Funada
FL 13-13-1
July 23, 2013



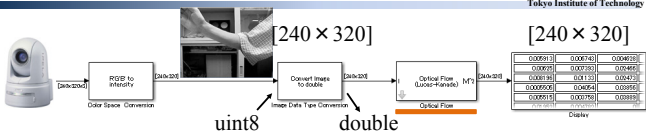
Objective



What is a criteria for deciding important areas?



Optical Flow

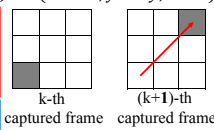


$$I(x, y, k) = I(x + \Delta x, y + \Delta y, k + 1)$$

Function
Estimate velocity of each pixels.

Tunable parameter
Smoothness factor

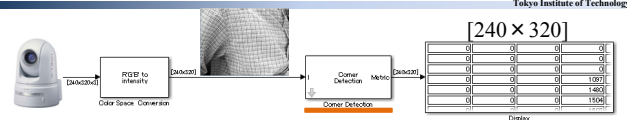
Output
Each pixels' velocity



Frame rate:30fps



Corner Detection



Local Intensity Comparison

Definition of corner
Corner has N contiguous bright or dark surrounding pixels.

Tunable parameter
Intensity comparison threshold
Corner's angle

Output
Each pixels' corner metric
Corners' location

Frame rate:22.5fps



Edge Detection



How to detect edge
Compute gradient magnitude in each direction.

Tunable parameter
Computational method
Edge's degree

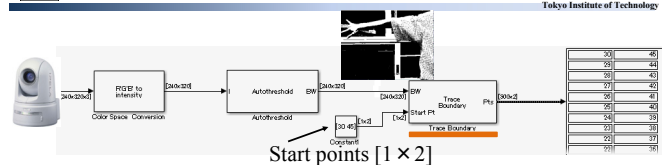
Output
Each pixels' gradient values
Binary image of edge



Frame rate
Gv&Gh: 1.6fps
G45&G135: 4.1fps



Trace Boundary



How to trace boundary
From start point, trace a boundary between nonzero pixels & zero pixels.

Tunable parameter
Connectivity of boundary
Trace direction Initial search direction

Output
Boundary points

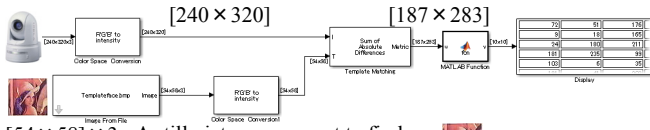
2 types of connectivity

Frame rate:30fps



Template Matching

Tokyo Institute of Technology



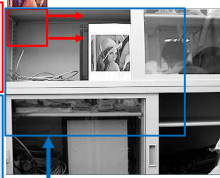
[54 x 58] x 3 A still picture you want to find.

Template

How to find template
Compute the match metric value at every pixel.

Tunable parameter
Computational method
Search region

Output
Each pixels' match metric
Template's upper left corner's location



Default search region

Frame rate: 0.068fps